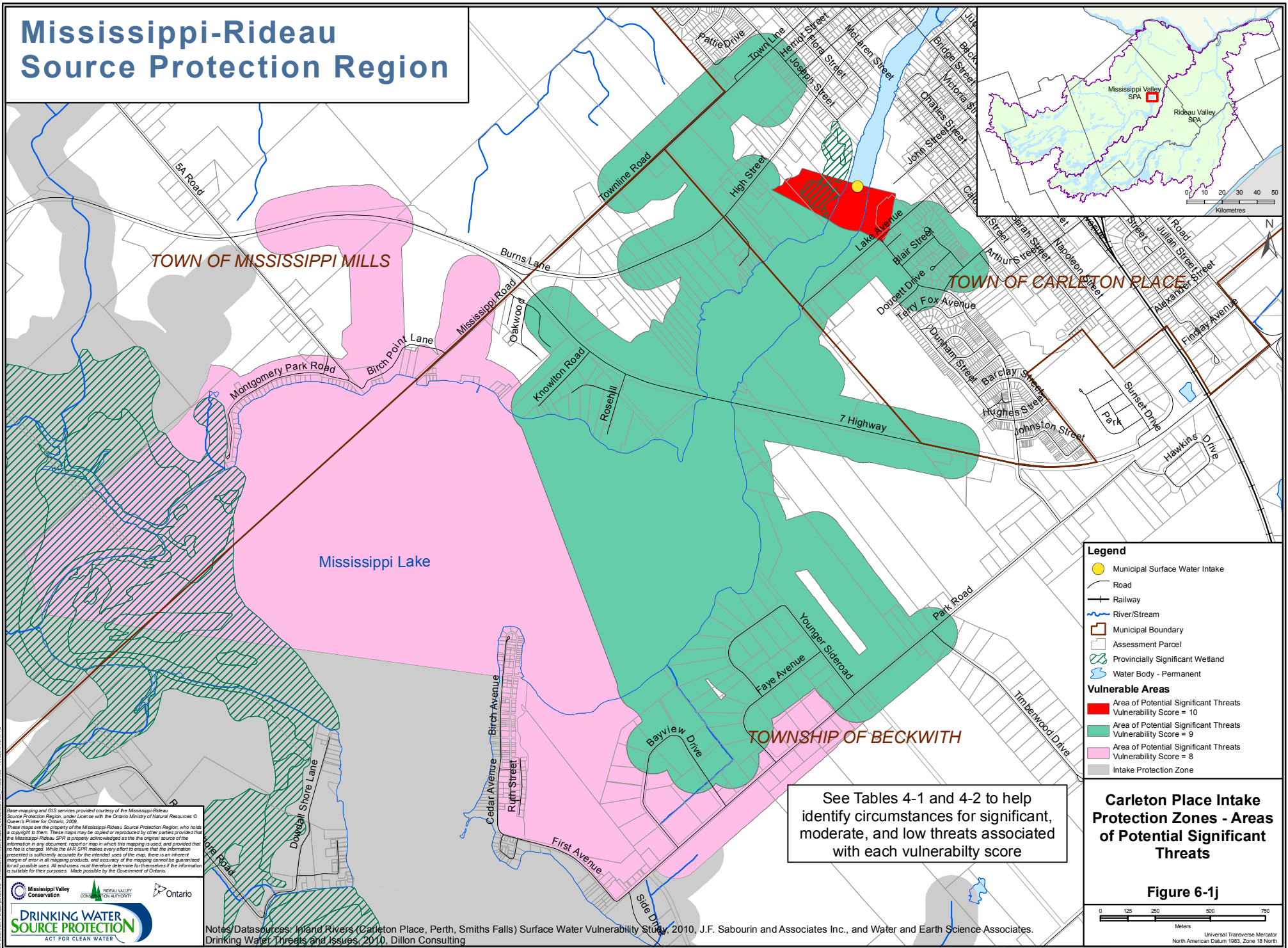


# Mississippi-Rideau Source Protection Region



TOWN OF MISSISSIPPI MILLS

TOWN OF CARLETON PLACE

TOWNSHIP OF BECKWITH

Mississippi Lake

**Legend**

- Municipal Surface Water Intake
- Road
- Railway
- River/Stream
- Municipal Boundary
- Assessment Parcel
- Provincially Significant Wetland
- Water Body - Permanent

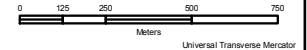
**Vulnerable Areas**

- Area of Potential Significant Threats  
Vulnerability Score = 10
- Area of Potential Significant Threats  
Vulnerability Score = 9
- Area of Potential Significant Threats  
Vulnerability Score = 8
- Intake Protection Zone

See Tables 4-1 and 4-2 to help identify circumstances for significant, moderate, and low threats associated with each vulnerability score

**Carleton Place Intake Protection Zones - Areas of Potential Significant Threats**

Figure 6-1j



Base mapping and GIS services provided courtesy of the Mississippi-Rideau Source Protection Region, under License with the Ontario Ministry of Natural Resources © Queen's Printer for Ontario, 2010. These maps are the property of the Mississippi-Rideau Source Protection Region, who holds a copyright to them. These maps may be copied or reproduced by other parties provided that the Mississippi-Rideau SPA is properly acknowledged as the original source of the information in any document, report or map in which this mapping is used, and provided that no fee is charged. While the MRSP makes every effort to ensure that the information presented is sufficiently accurate for the intended uses of the map, there is an inherent margin of error in all mapping products, and accuracy of the mapping cannot be guaranteed for all possible uses. All end users must therefore determine for themselves if the information is suitable for their purposes. Made possible by the Government of Ontario.



Notes/Datasources: Inland Rivers (Carleton Place, Perth, Smiths Falls) Surface Water Vulnerability Study, 2010, J.F. Sabourin and Associates Inc., and Water and Earth Science Associates. Drinking Water Threats and Issues, 2010, Dillon Consulting

Universal Transverse Mercator  
North American Datum 1983, Zone 18 North