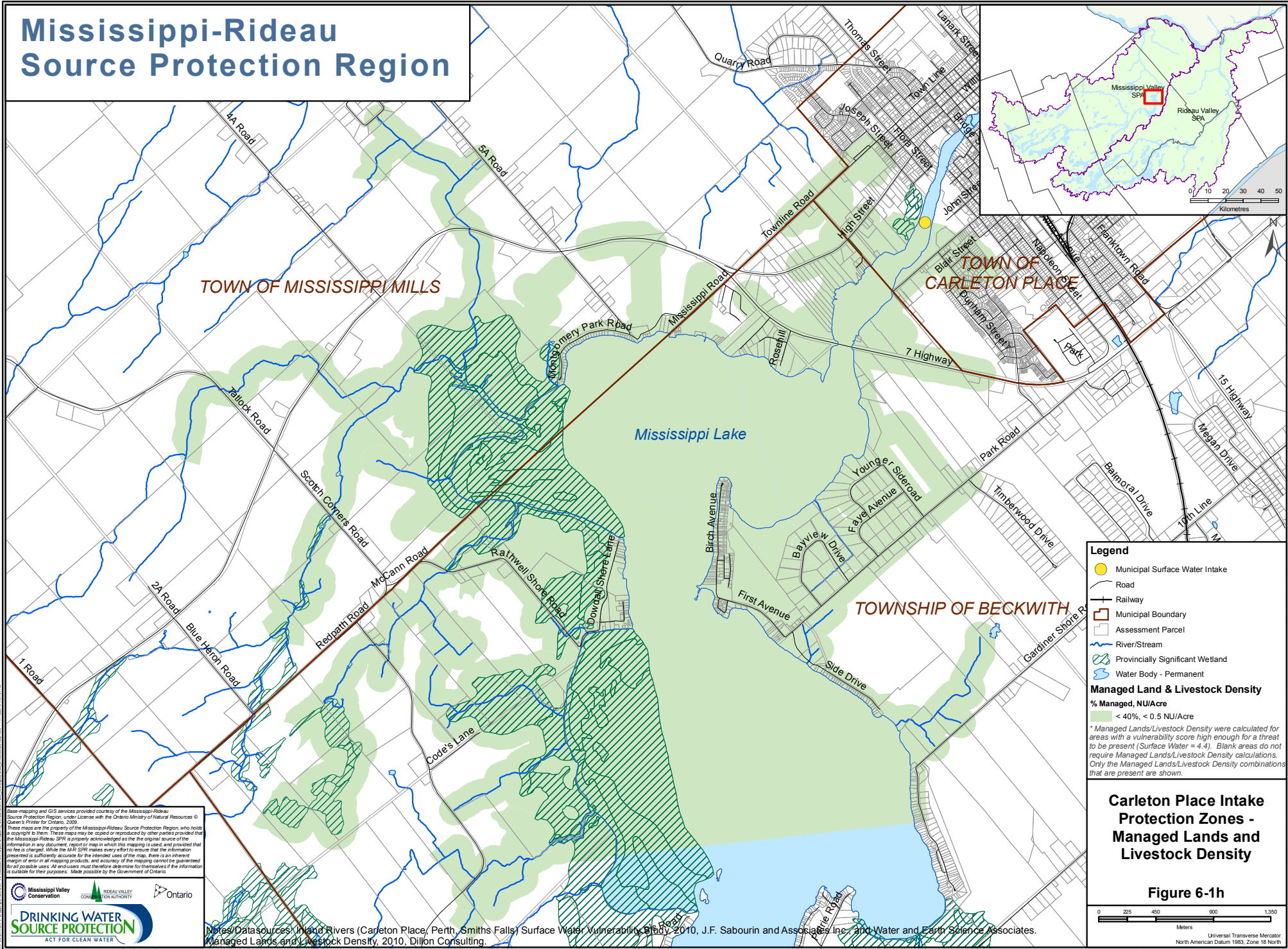


# Mississippi-Rideau Source Protection Region



**Legend**

- Municipal Surface Water Intake
- Road
- Railway
- Municipal Boundary
- Assessment Parcel
- River/Stream
- Provincially Significant Wetland
- Water Body - Permanent

**Managed Land & Livestock Density**

% Managed, NU/Acre

- < 40%, < 0.5 NU/Acre

\* Managed Lands/Livestock Density were calculated for areas with a vulnerability score high enough for a threat to be present (Surface Water = 4.4). Blank areas do not require Managed Lands/Livestock Density calculations. Only the Managed Lands/Livestock Density combinations that are present are shown.

**Carleton Place Intake Protection Zones - Managed Lands and Livestock Density**

**Figure 6-1h**

Universal Transverse Mercator  
North American Datum 1983, Zone 18 North

Base mapping and GIS services provided courtesy of the Mississippi-Rideau Source Protection Region, under License with the Ontario Ministry of Natural Resources © Queen's Printer for Ontario, 2010.  
These maps are the property of the Mississippi-Rideau Source Protection Region, who holds a copyright to them. These maps may be copied or reproduced by other parties provided that the Mississippi-Rideau SPA is properly acknowledged as the original source of the information in any document, report or map in which this mapping is used, and provided that no fee is charged. While the MRSP makes every effort to ensure that the information presented is sufficiently accurate for the intended uses of the map, there is an inherent margin of error in all mapping products, and accuracy of the mapping cannot be guaranteed for all possible uses. All end users must therefore determine for themselves if the information is suitable for their purposes. Made possible by the Government of Ontario.

**DRINKING WATER SOURCE PROTECTION**  
ACT FOR CLEAN WATER

Notes/Data sources: Inland Rivers (Carleton Place, Perth, Smiths Falls) Surface Water Vulnerability Study, 2010, J.F. Sabourin and Associates, Inc. and Water and Earth Science Associates. Managed Lands and Livestock Density, 2010, Dillon Consulting.